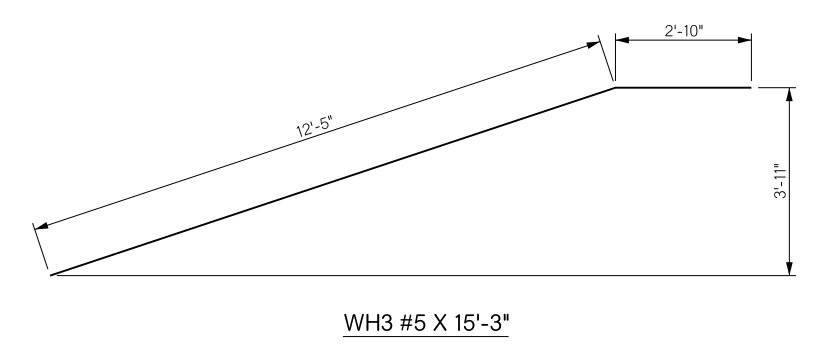
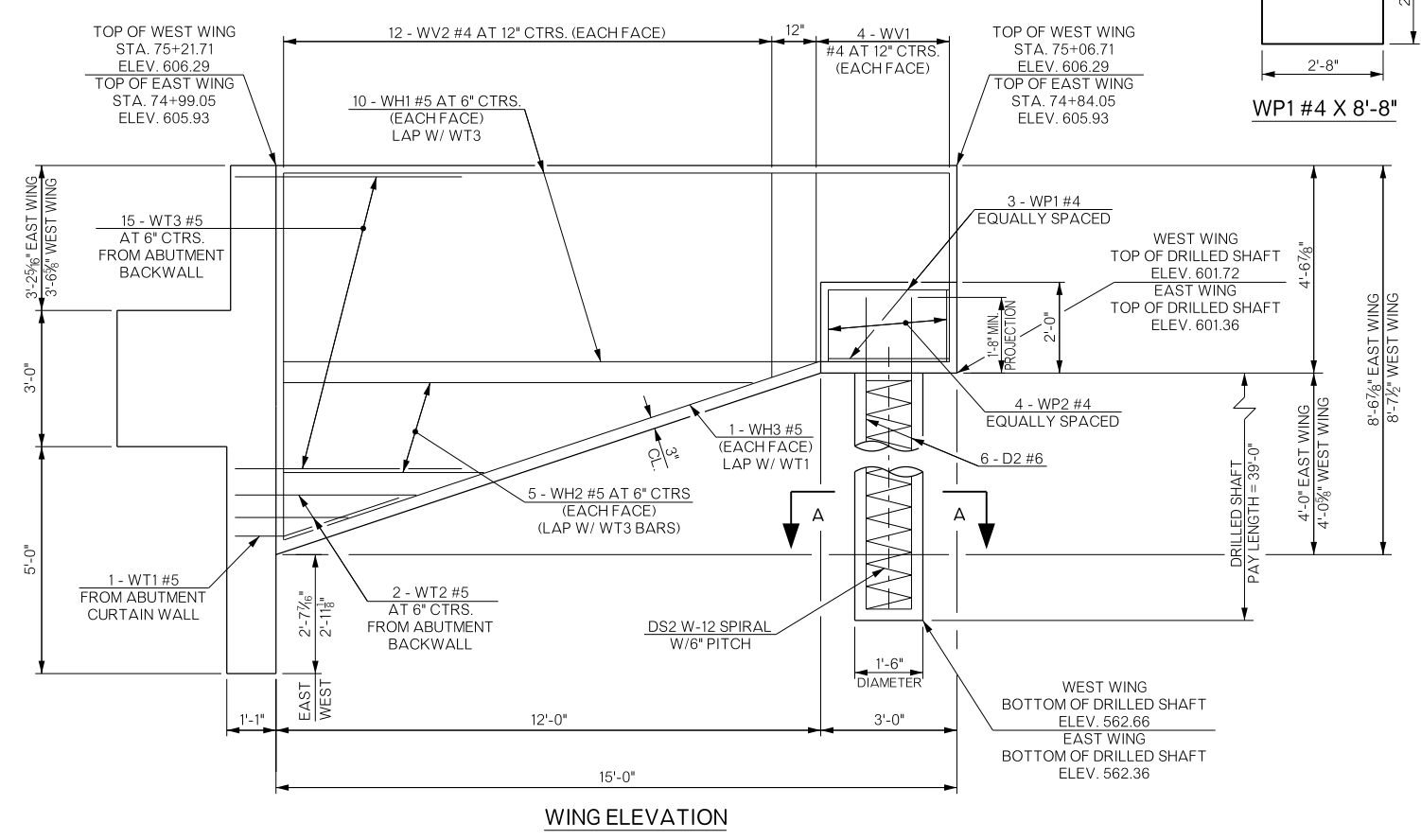
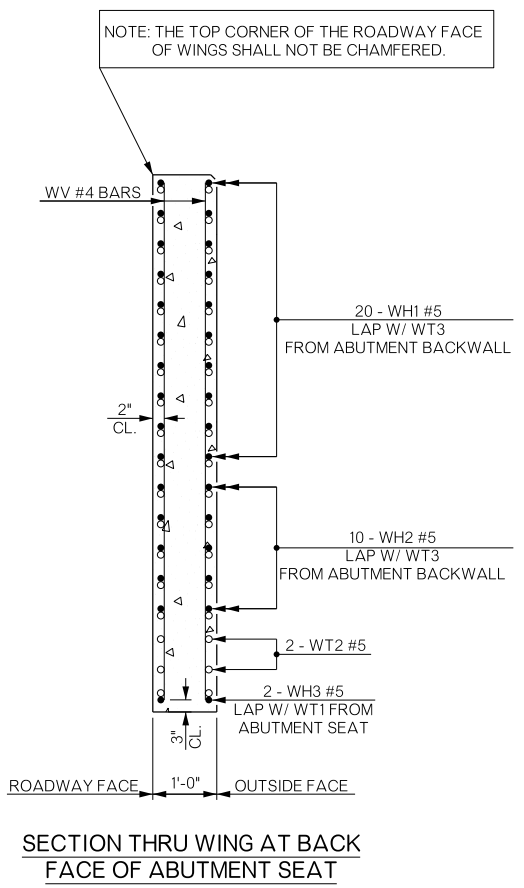


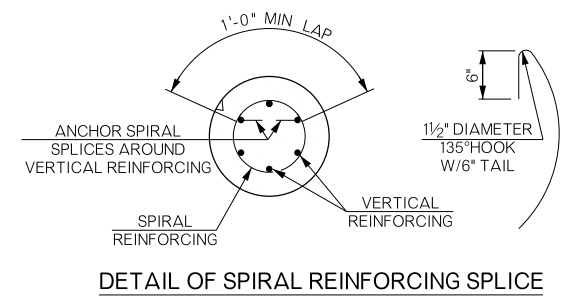
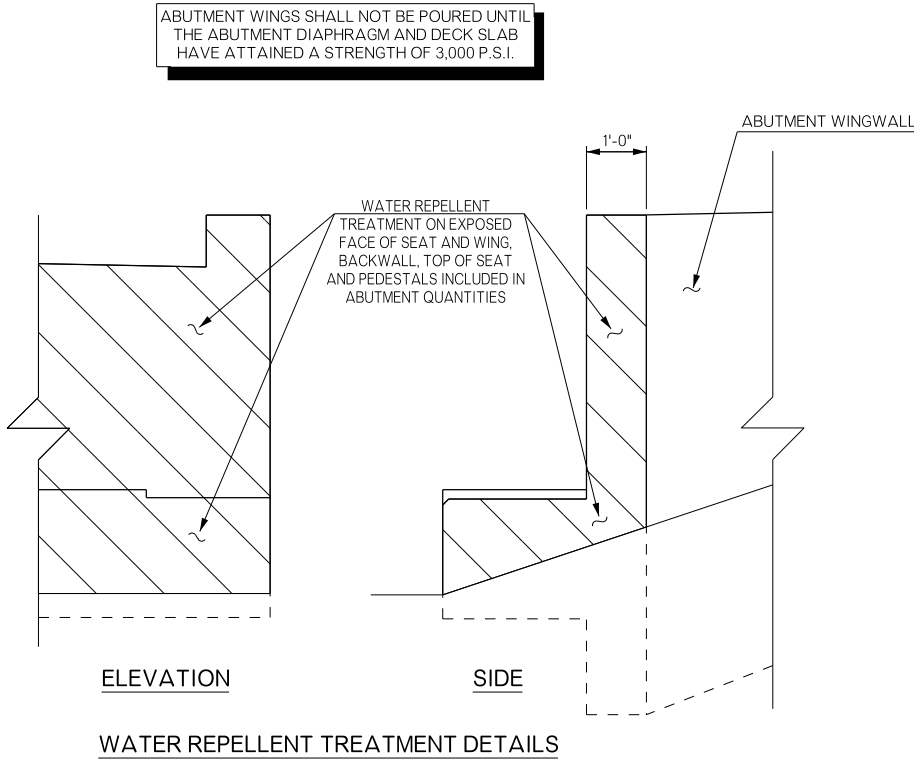
REVISIONS		
REV. NO.	DESCRIPTION	DATE



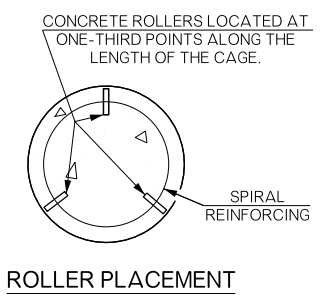
BAR LIST - EAST WING					
MARK	NO.	SIZE	FORM	LENGTH	VARIANCE
EPOXY COATED					
WH1	20	#5	STR.	14'-8"	---
WH2	10	#5	STR.	7'-4 1/2" AVG.	4'-5" TO 10'-4"
WH3	2	#5	BNT.	15'-3"	---
WP1	3	#4	BNT.	8'-8"	---
WP2	4	#4	STR.	1'-7"	---
WV1	8	#4	STR.	4'-2"	---
WV2	24	#4	STR.	6'-3 1/2" AVG.	4'-6" TO 8'-1"
ONE 18" DRILLED SHAFT					
EPOXY COATED					
D2	6	#6	STR.	40'-5"	---
NON-EPOXY COATED					
DS2	1	W12	SPIRAL	132'-5"	---

BAR LIST - WEST WING					
MARK	NO.	SIZE	FORM	LENGTH	VARIANCE
EPOXY COATED					
WH1	20	#5	STR.	14'-8"	---
WH2	10	#5	STR.	7'-4 1/2" AVG.	4'-5" TO 10'-4"
WH3	2	#5	BNT.	15'-3"	---
WP1	3	#4	BNT.	8'-8"	---
WP2	4	#4	STR.	1'-7"	---
WV1	8	#4	STR.	4'-2"	---
WV2	24	#4	STR.	6'-3 1/2" AVG.	4'-6" TO 8'-1"
ONE 18" DRILLED SHAFT					
EPOXY COATED					
D2	6	#6	STR.	40'-5"	---
NON-EPOXY COATED					
DS2	1	W12	SPIRAL	132'-5"	---

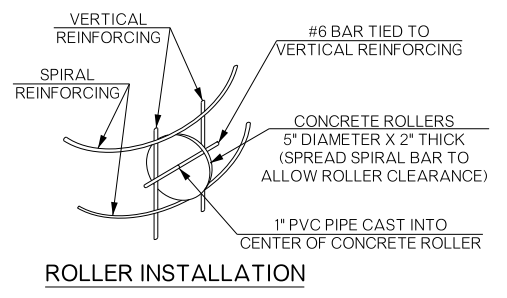
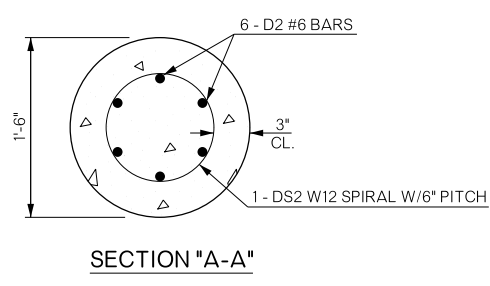
- ① 2 SETS OF 5 BARS.
- ② 2 SETS OF 6 BARS.
- ③ INCLUDED IN PRICE BID PER LINEAR FOOT OF DRILLED SHAFT.



NOTES: SPIRAL BARS SHALL CONFORM TO AASHTO M32. SPIRAL BAR LENGTH DOES NOT INCLUDE LAP. IF LAP IS REQUIRED, THE LENGTH OF THE LAP SHALL BE AS SHOWN.



NOTE: CONCRETE USED IN THE CONCRETE ROLLERS SHALL HAVE A MINIMUM 28 DAY COMPRESSIVE STRENGTH OF 4,000 P.S.I. SLAB BOLSTERS, HIGH CHAIRS, AND PLASTIC ROLLERS SHALL NOT BE SUBSTITUTED FOR THE CONCRETE ROLLERS.



BRIDGE "A" SH-78 OVER CHUCKWA CREEK		BRYAN COUNTY		Design	CJO	6/15
ABUTMENT NO. 1 DETAILS (SHEET 4 OF 4)				Detail	DPG	8/15
				Check	TEE	9/15
STATE OF OKLAHOMA				DEPARTMENT OF TRANSPORTATION		Sheet No. B008
JOB/PIECE NO. 27912(04)		DATE				